



INSTRUCTION BULLETIN

No. 9045139
Machine: S16
Published: 10-2023
Rev. 00

NOTE: DO NOT DISCARD the Parts List from the Instruction Bulletin. Place the Parts List in the appropriate place in the machine manual for future reference. Retaining the Parts List will make it easier to reorder individual parts and will save the cost of ordering an entire kit.

NOTE: Numbers in parenthesis () are reference numbers for parts listed in Bill of Materials.

Installation instructions for **kit number 9045162**

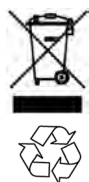
Kit installation must be performed by TennantTrue[®] service or an authorized service provider.

SYNOPSIS:

This kit contains the parts needed to install the carpet care kit onto S16 sweepers.
Please follow step-by-step instructions.

SPECIAL TOOLS/CONSIDERATIONS: NONE

(Estimated time to complete: 1 hour)



PROTECT THE ENVIRONMENT

Please dispose of packaging materials, used machine components such as batteries and fluids in an environmentally safe way according to local waste disposal regulations.

Always remember to recycle.

PREPARATION:

FOR SAFETY: Before leaving or servicing machine, stop on level surface, turn off machine, and remove key.

1. Raise the sweeping main brush and turn off the machine.

INSTALLATION:

1. Release and open the main sweeping brush compartment access door. (Fig. 1)



FIG. 1

2. Remove the knobs securing the idler arm assembly to the main sweep assembly. Set both knobs aside. (Fig. 2/Fig. 3)



FIG. 2



FIG. 3

3. Remove the idler arm assembly from the main brush assembly. Set the idler arm assembly aside. (Fig. 4)



FIG. 4

4. Pull the brush from the main sweep compartment. Discard the removed main brush. (Fig. 5)



FIG. 5

5. Insert the new sweep brush (5) into the main sweep compartment. (Fig. 5)
6. Remove the left sweep skirt from the sweep idler door. Set the left skirt retainer and all mounting hardware aside. Discard the removed left sweep skirt. (Fig. 6)
7. Install the new left sweep skirt (2) onto the sweep idler door. (Fig. 6/Fig. 9)
8. Reinstall the idler arm assembly onto the main brush assembly. (Fig. 2/Fig. 3/Fig. 4)

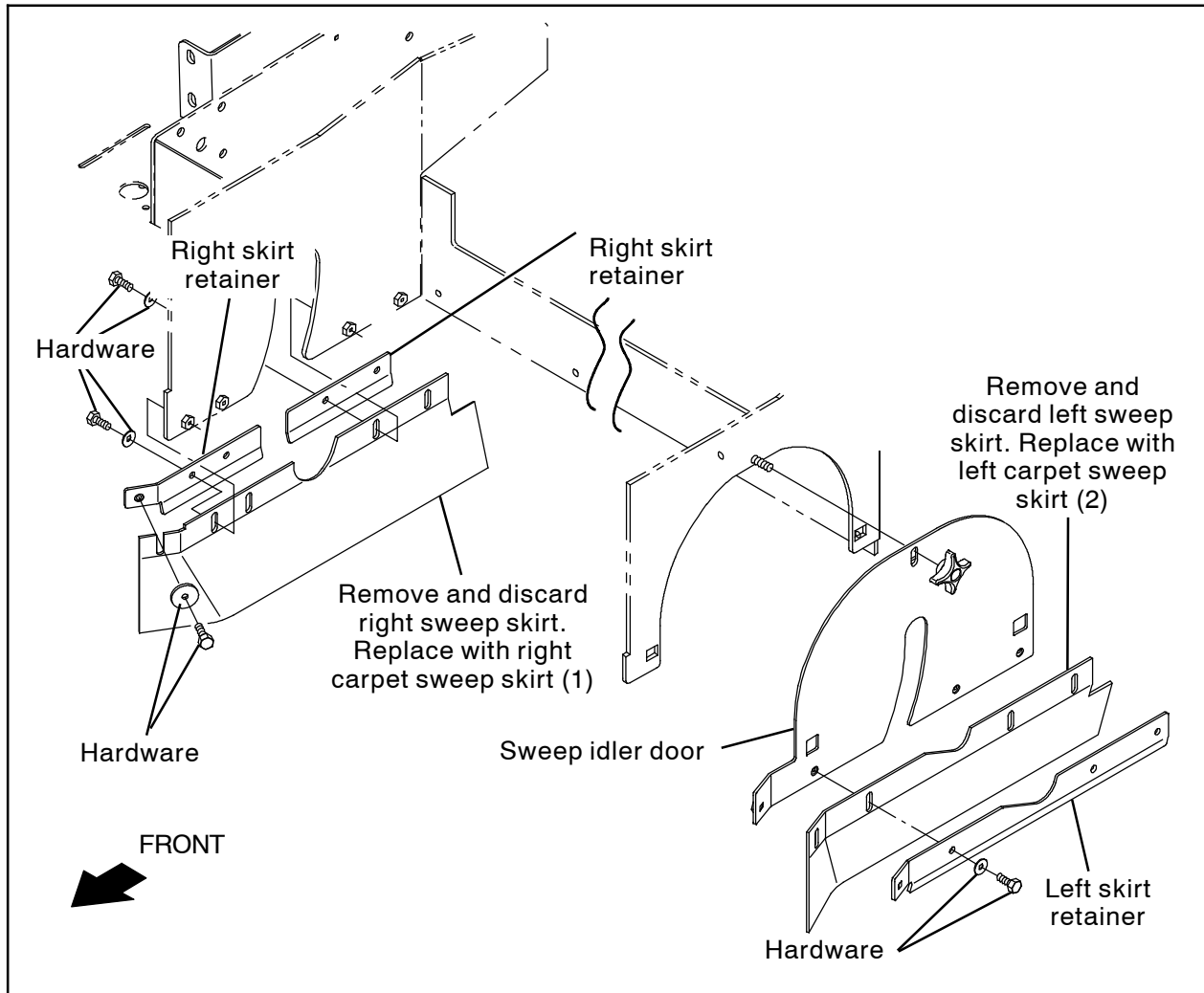


FIG. 6

9. Remove the brush stop door from the machine. Set the brush stop door and mounting hardware aside. (Fig. 7)

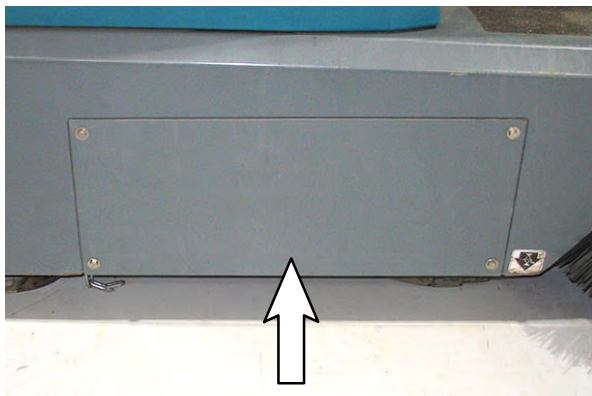


FIG. 7

10. Remove the right sweep skirt from the machine. Set both right skirt retainers and all mounting hardware aside. (Fig. 6/Fig. 8)

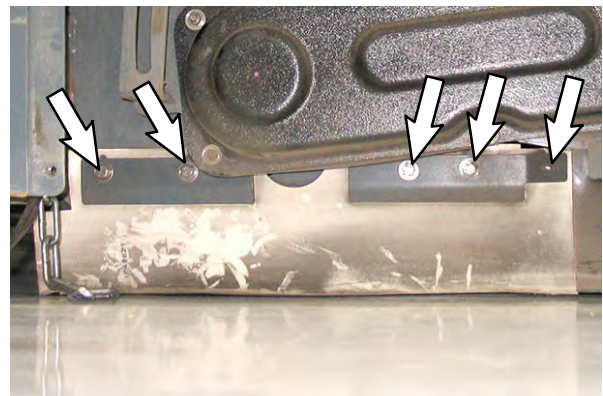


FIG. 8

11. Install the new right sweep skirt (1) onto the frame of the machine. (Fig. 6/Fig. 8)
12. Reinstall the brush stop door onto the machine.

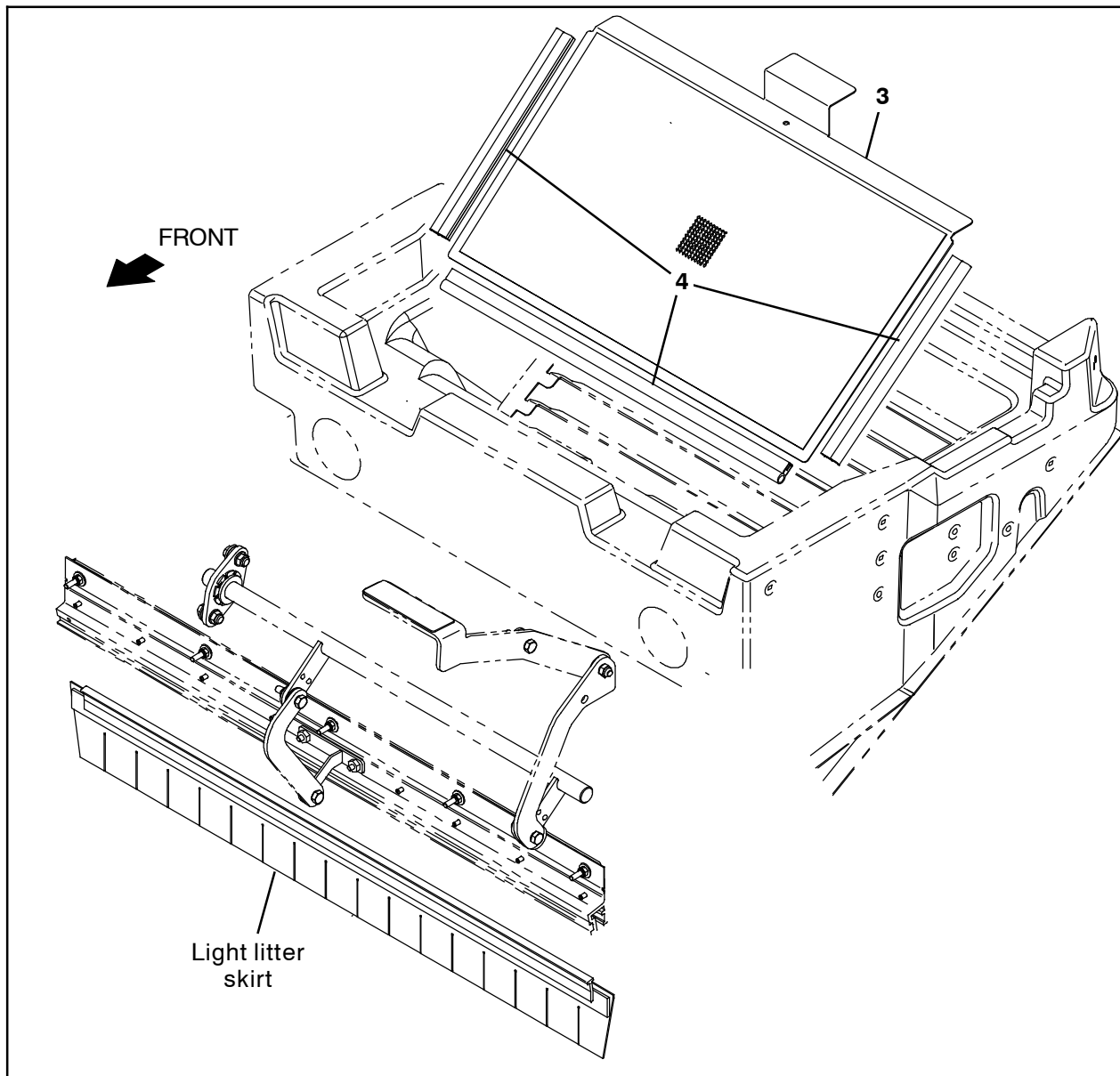


FIG. 9

13. Cut the bulb seal (4) into the three appropriate lengths to be installed onto the screen filter weldment (3). (Fig. 9)

14. Install the bulb seal (4) lengths onto the screen filter weldment (3). (Fig. 9)

15. Loosen the hopper filter compartment retainer located on each side of the filter compartment. (Fig. 10)



FIG. 10

16. Lift the hopper filter compartment until the hopper filter compartment prop arms secure the hopper filter compartment open. (Fig. 11/ Fig. 12)

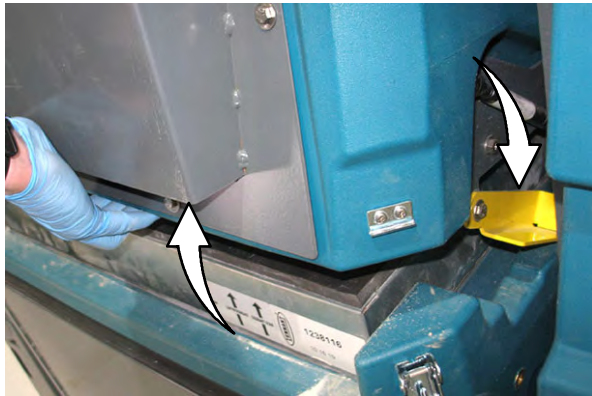


FIG. 11

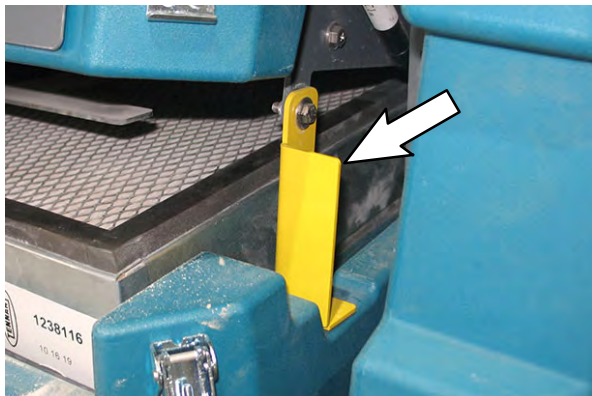


FIG. 12

NOTE: Ensure the hopper filter compartment prop arm is fully engaged before removing the filter/ installing the screen filter weldment (3) into the machine.

17. Remove the filter from the hopper filter compartment. (Fig. 13)



FIG. 13

18. Install the screen filter weldment (3) into the hopper filter compartment. (Fig. 9)

19. Reinstall the filter into the filter compartment.

20. Disengage the hopper filter compartment prop arms, lower the hopper filter compartment, and secure the hopper filter compartment closed.

21. Test the machine. Operate the machine over a carpeted surface and observe cleaning performance. Adjust the newly installed brush and skirts as necessary. See CHECKING THE MAIN SWEEP BRUSH PATTERN and ADJUSTING THE MAIN SWEEP BRUSH PATTERN in the MAINTENANCE section of the Operator Manual.

Bill Of Materials For Parts Kit, Carpet Care, DI - 9045162

| Ref. | Tennant Part No. | Description | Qty. |
|-------------|-------------------------|--|-------------|
| 1 | 1249621 | Skirt, Swp, RH [Carpet] | 1 |
| 2 | 1249622 | Skirt, Swp, LH [Carpet] | 1 |
| 3 | 1246587 | Filter Wldt, Screen | 1 |
| 4 | C410219 | Seal, Bulb, Str, 0.50d .13grip, Bulk (4.0 ft. (1219 mm)) | 1 |
| 5 | 1255809 | Brush, Swp, 32.4L, 06DR, UMX, Spl | 1 |

TENNANT COMPANY
10400 Clean Street
Eden Prairie, MN 55344- 2650